



Network Manager
nominated by
the European Commission



Monthly Network Operations Report

Overview - September 2014



SUMMARY

Traffic increased by 1.1% in September 2014 and remains close to the baseline forecast. The Ukraine crisis continues to distort traditional traffic flows in the region, with increases in excess of 10% observed in a number of neighbouring ACCs.

The closure of Libyan airspace (extended until 15 October 2014) also continues to influence traffic flows in the region.

En-route ATFM delays increased by 7.4% compared to September 2013, while airport ATFM delays increased by 42.7%.

Highlights include:

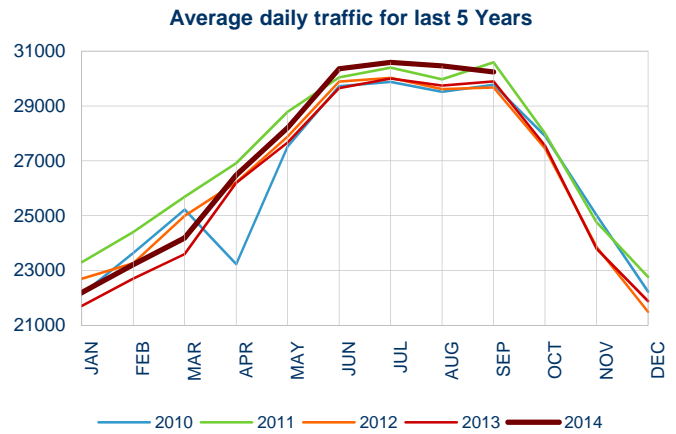
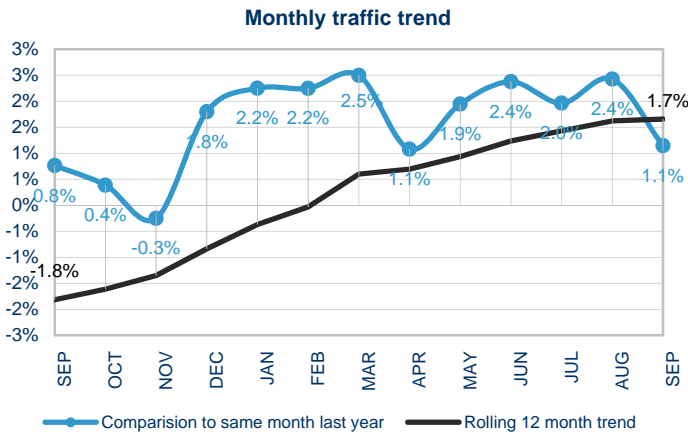
- Delays generated by Nicosia ACC and Tel Aviv/Ben Gurion airport reduced significantly compared to August;
- Adverse weather caused most ATFM delays impacting operations at several airports and some ACCs;
- Industrial action by Air France and Lufthansa pilots led to significant numbers of flight cancellations;
- Industrial action by Italian air navigation services on Saturday 6 September impacted local operations and Karlsruhe, Maastricht and Reims ACCs.

The average en-route delay per flight in September was 0.52 min/ft, which is below the monthly guideline* value of 0.59 min/ft – for the first time in 2014.

The average en-route delay per flight in 2014 to date is 0.70 min/ft which is above the corresponding guideline value of 0.53 min/ft.

* NM's calculation that provides the guideline en-route delay (min) requirements to achieve the annual target (0.5 min/flight).

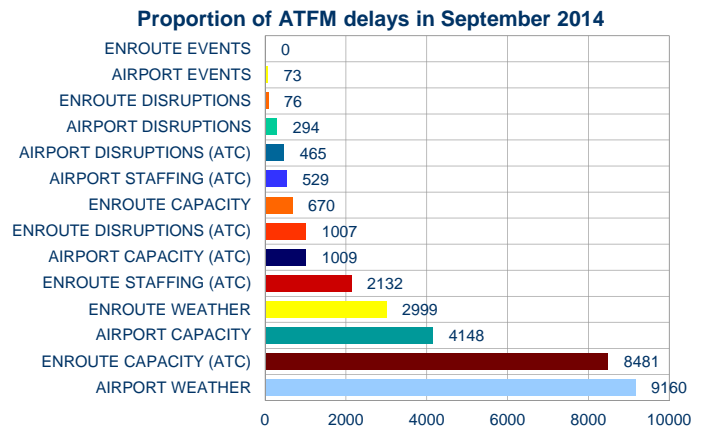
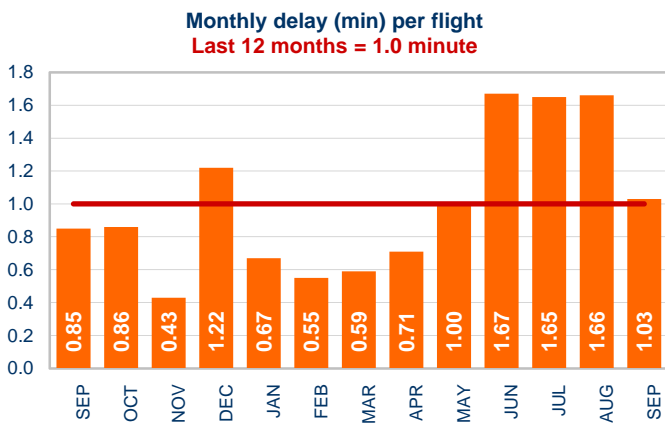
1. TOTAL TRAFFIC



Traffic increased by 1.1% in September 2014 compared to September 2013, which is close to the baseline forecast for September. The recovery in traffic that dates back to April 2013 continues despite a slowdown in both April and September 2014.

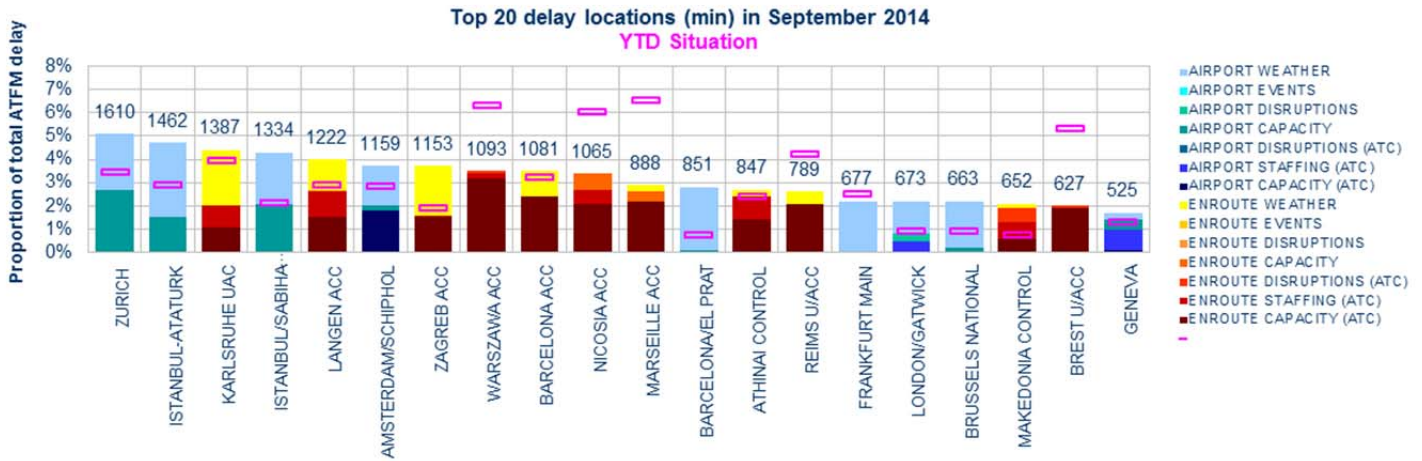
Average daily traffic in September fell below 2011 levels for the first time since May 2014.

2. ATFM DELAYS



Average ATFM delay per flight increased from 0.85 mins/ft in September 2013 to 1.03 min/ft in September 2014.

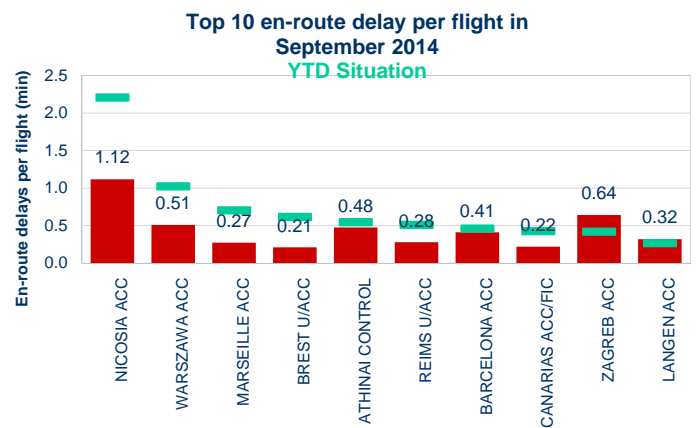
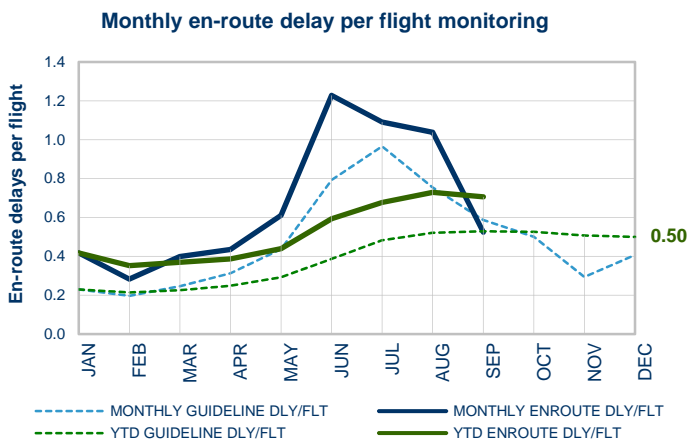
Airport weather (29.5%), en-route ATC capacity (27.3%) and airport capacity (13.4%) were the biggest contributors to ATFM delays in September.



These are the top 20 delay generating locations for the reporting month with respect to ATFM delays. Figures are the average daily delays in minutes for the individual locations. Pink dashes (Year-To-Date - YTD) indicate their average daily ATFM delay since the beginning of the year.

- Zurich, Istanbul/Ataturk, Istanbul/Sabiha Gokcen, Amsterdam/Schiphol, Barcelona/El Prat, Frankfurt/Main, London/Gatwick, Brussels/National and Geneva airports were particularly affected by weather (fog/low visibility and thunderstorms) in September;
- Karlsruhe, Langen, Zagreb, Warsaw, Barcelona, Nicosia, Marseille, Athens, Reims, Makedonia and Brest ACCs experienced en-route ATC capacity issues;
- Zurich, Istanbul/Ataturk, Istanbul/Sabiha Gokcen, Brussels/National and Geneva airports generated delays due to airport capacity;
- Amsterdam/Schiphol, London/Gatwick and Geneva airports were particularly affected by airport ATC capacity issues, with London/Gatwick and Geneva airports additionally affected airport ATC staffing;
- Karlsruhe, Langen, Zagreb, Barcelona, Marseille, Athens, Reims and Makedonia ACCs were particularly affected by seasonal weather;
- Karlsruhe, Langen, Nicosia, Athens, and Makedonia ACCs generated delays due to en-route ATC staffing;
- Warsaw (OLDI), Makedonia (communications) and Brest ACC (Reims TMA radar) generated en-route ATC disruptions delays due to technical issues.

3. EN-ROUTE ATFM DELAY MONITORING



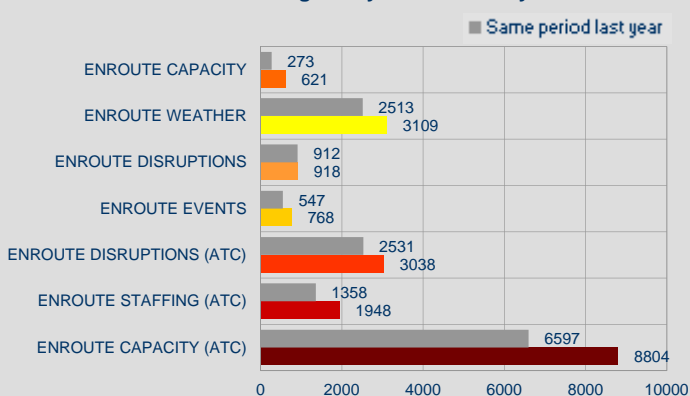
Reporting month: The average en-route delay per flight in the NM area in September was 0.52 min/flt, which is below the corresponding monthly guideline* value of 0.59 min/flt.

Year to date: The average en-route delay per flight in the NM area in 2014 to date is 0.70 min/flt which is above the corresponding guideline value of 0.53 min/flt.

Nicosia ACC delays reduced significantly compared to August 2014.

Of the top 10 ACCs, only Zagreb and Langen ACCs exceeded their year to date delay average.

Year-to-date average daily en-route delays



En-route ATFM delays in 2014 are higher than the corresponding levels in 2013 with :

- High en-route capacity (ATC) and en-route staffing (ATC) delays in Athens, Barcelona, Marseille, Reims, Warsaw, Zagreb, Brest, Bratislava, Karlsruhe and Nicosia ACCs;
- Adverse weather which commenced in July continues to affect the en-route element of the network, particularly Karlsruhe, Zagreb and Langen ACCs, as well as Reims, Paris and Maastricht ACCs;
- Exceptional en-route disruptions (ATC) due to French industrial action in January, March, May and June, Italian industrial action in September;
- En-route disruptions in Maastricht, Karlsruhe, Madrid, Langen, London and Barcelona ACCs due to the French ATC industrial action, and in Ankara ACC due to the increased longitudinal separation on Iraqi border, with the ATFM restriction being cancelled from 10 August;
- En-route event delays generated by Warsaw ACC (PEGASUS 21 ATM system implementation) and Langen ACC (Paperless Strip System (PSS) implementation).